



What is Recyclable with Helena Recycling?

Please sort into three bins:

Yes!

1. Paper Bin

No

Newspapers/inserts, magazines, home office paper (white/pastel), BAGGED shredded paper, copy/fax paper, post-it-notes, white envelopes, and paper ream wrappers.



Tissues/tissue paper, food wrappings, paper towel, soiled/food stained paper, hard back book bindings, construction paper, wrapping paper and dark colored office paper, phone books, manila envelopes and file folders.



Yes!

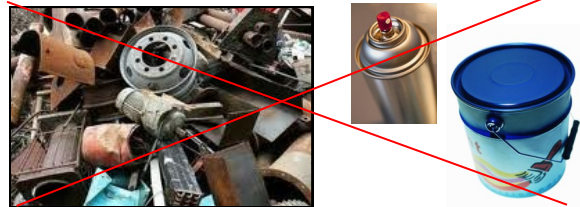
2. Metal Bin

No

Aluminum cans and steel/tin cans.



Bottle caps, aerosol cans, paint/solvent containers, and scrap metal.



Yes!

3. Plastics Bin

No

All **Type 1 and Type 2 plastic** containers accepted: plastic bottles, milk jugs, pop/water/juice bottles, laundry detergent bottles. **Make sure it has a recycling symbol with a 1 or 2. Remove lids!**



Type 3-7 plastics like butter and yogurt containers. Plastic caps or lids. No styrofoam. Plastic bags, wrappers, zip lock bags, bread bags, etc. **No bags of any kind.**



Cardboard

Corrugated and non-corrugated

Flatten and place cardboard under bins. Thin (non-corrugated) cardboard and other small cardboard boxes can be flattened and put in another box/container (see picture below).

Yes!

Moving/mailling boxes, clean cardboard egg cartons, cereal boxes, pop/beer cartons, and any thin cardboard. **Must be flattened!**



No

Soiled cardboard, (i.e. oily pizza boxes), milk cartons, and paper cups.



Policy Reminders — PLEASE READ!

- Rinse out ALL recycled containers.
- Flatten ALL cardboard boxes — cardboard not broken down will not be taken.
- DO NOT put non-corrugated cardboard (like cereal boxes) with your paper. Place in a separate box/container (see picture below).
- **WINDY DAYS:** Place paper bin on top with a piece of cardboard and a rock on the top (see picture below).
- Keep bins stored indoors until pick-up day to preserve their condition.
- No small bags filled with recyclables.
- No plastic bags of any kind.
- Remove all lids.
- Absolutely NO trash.

Please try to put your bins out the night before your scheduled pick-up day.
Contact us if you have any questions!

Helena Recycling, LLC
PO Box 6020
Helena, MT 59604

